

Red Sea Urchin Fishery

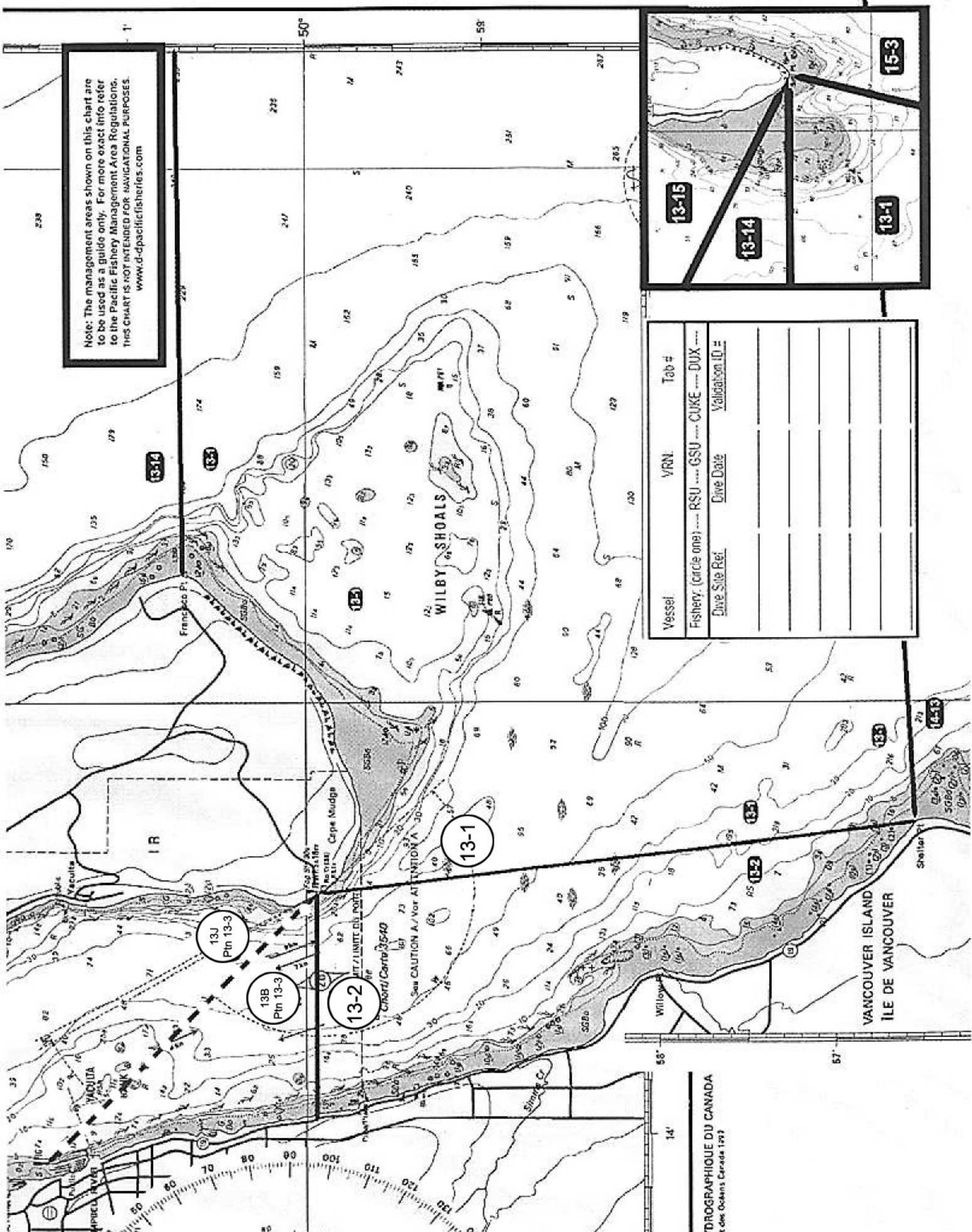
Quota Area

13B Campbell River South

Area Description

Subareas 13-1, 13-2, ptn 13-3 south of a line from the Campbell River breakwater to Cape Mudge light, and ptn 14-13 north of a line running due East from the Oyster River at 49° 52.145N & 125° 6.870W.

Note: The management areas shown on this chart are to be used as a guide only. For more exact info refer to the Pacific Fishery Management Area Regulations. THIS CHART IS NOT INTENDED FOR NAVIGATIONAL PURPOSES. www.d-pacificfisheries.com



Vessel	VRN	Tab #
Fishery: (circle one) --- RSU --- GSU --- CUKE --- DUX ---		
Dive Site Ref.	Dive Date	Validation ID #

HYDROGRAPHIQUE DU CANADA
 des Océans Canada 1797

Vessel:	CFV #:	Tab #:
FISHERY --- (CIRCLE ONE) --- RSU --- GSU --- CUKE ---		
Dive Site Ref.	Dive Date	Validation ID #

Note: The management areas shown on this chart are to be used as a guide only. For more exact info refer to the Pacific Fishery Management Area Regulations. THIS CHART IS NOT INTENDED FOR NAVIGATIONAL PURPOSES
www.d-tpacificfisheries.com

