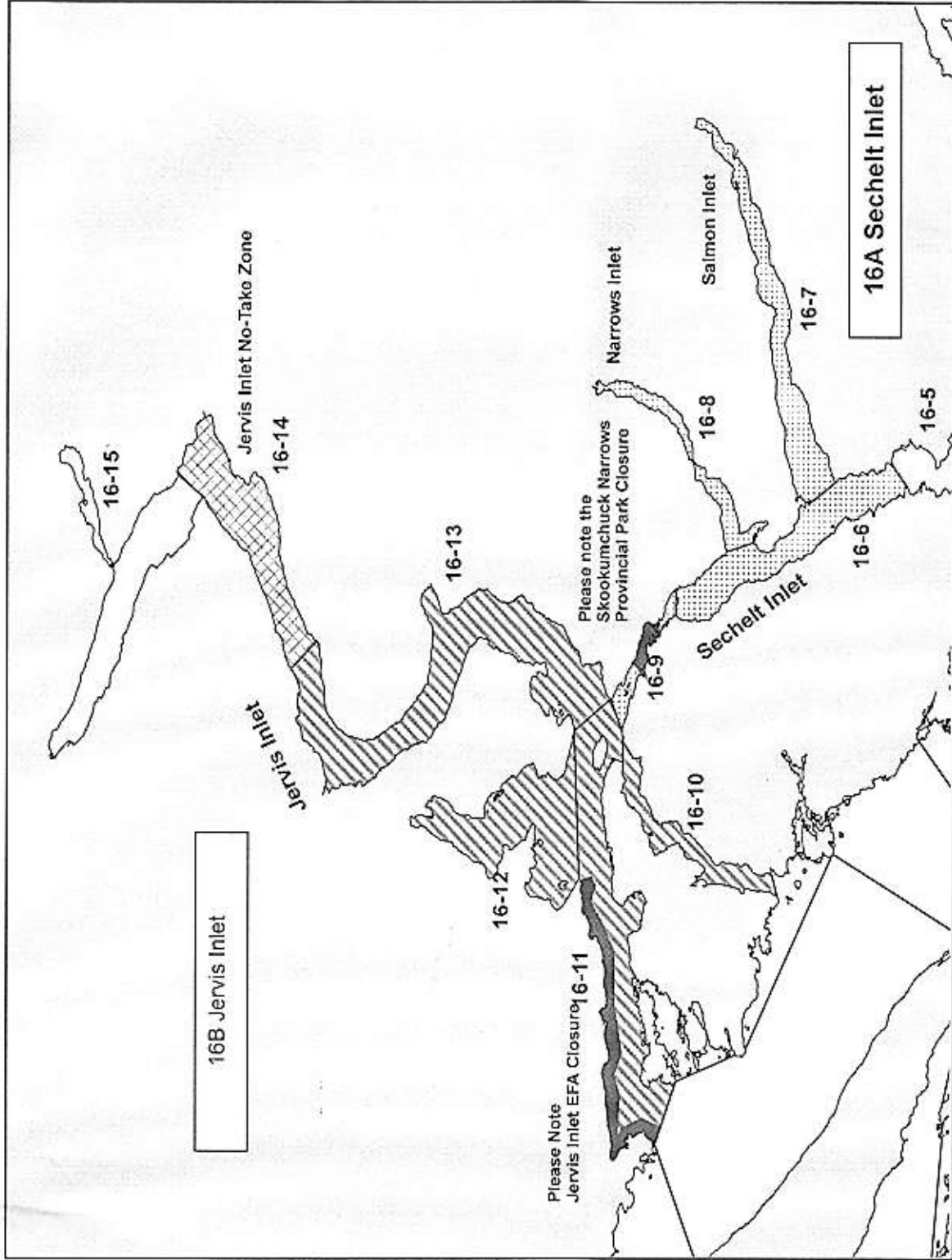
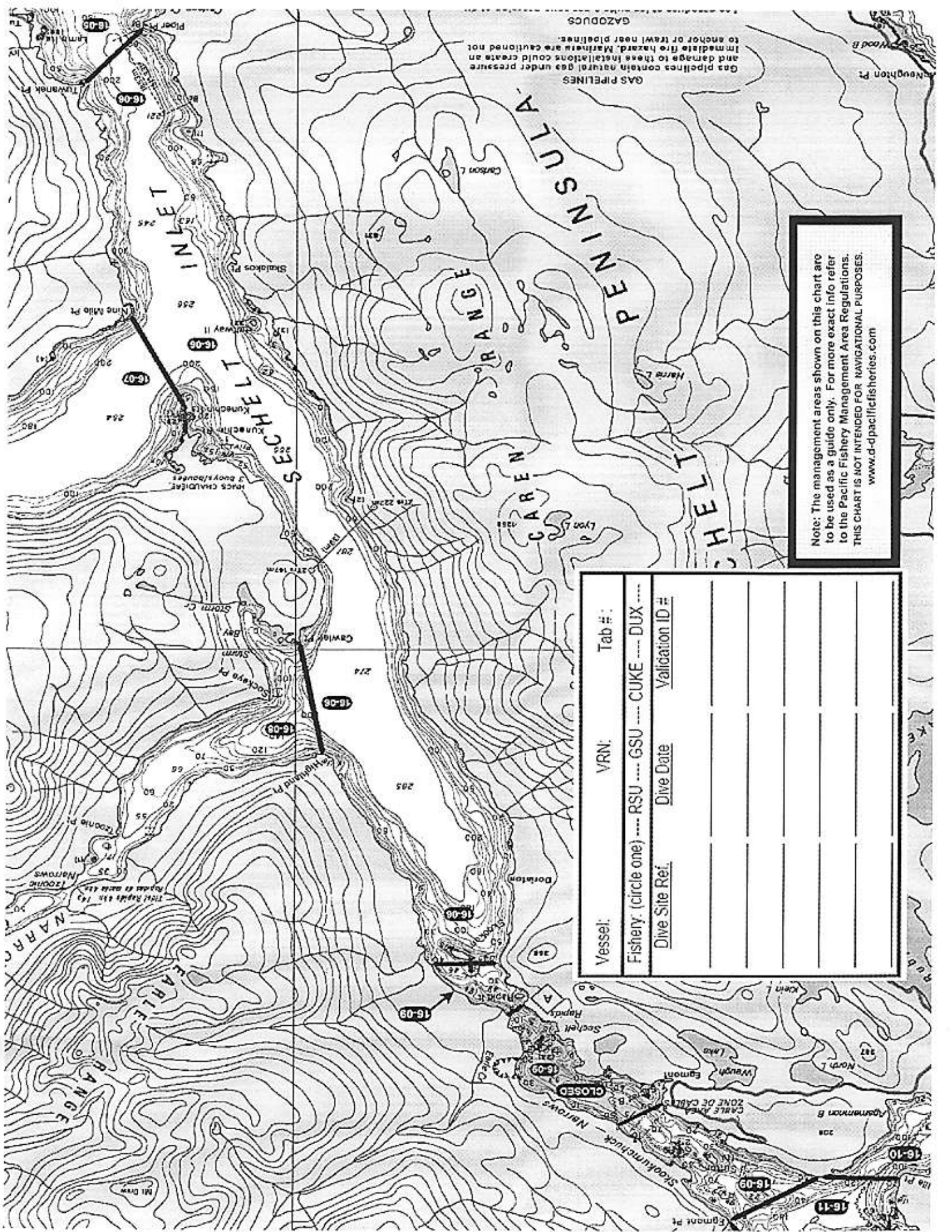


SEA CUCUMBER HARVEST CHART SET



**16A Sechelt Inlet: Subareas 16-6 to 16-8, Ptn. 16-9**

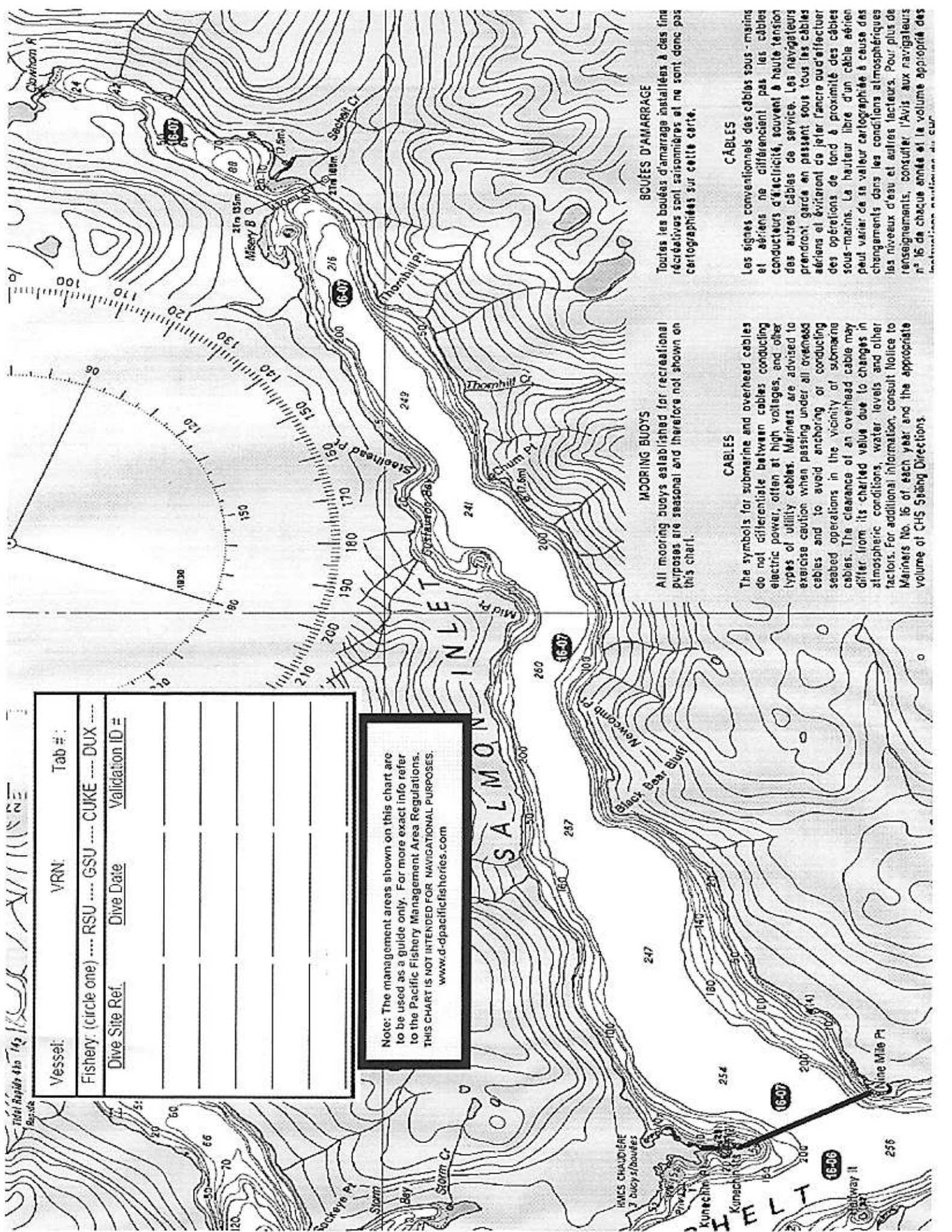
**Closures:** Jervis Inlet No-Take Zone; Subarea 16-14, Skookumchuck Narrows Provincial Park & Jervis Inlet EFA



GAS PIPELINES  
 Gas pipelines contain natural gas under pressure and damage to these installations could create an immediate fire hazard. Fishermen are cautioned not to anchor or trawl near pipelines.

Note: The management areas shown on this chart are to be used as a guide only. For more exact info refer to the Pacific Fishery Management Area Regulations. THIS CHART IS NOT INTENDED FOR NAVIGATIONAL PURPOSES. www.d-pacificheries.com

Vessel:	VRN:	Tab #:
Fishery: (circle one) ---- RSU ---- GSU ---- CUKE ---- DUX ----		
Dive Site Ref.	Dive Date	Validation ID#



Vessel:	VRN:	Tab #:
Fishery: (circle one) .... RSU .... GSU .... CUKE .... DUX ....		
Dive Site Ref.	Dive Date	Validation ID #

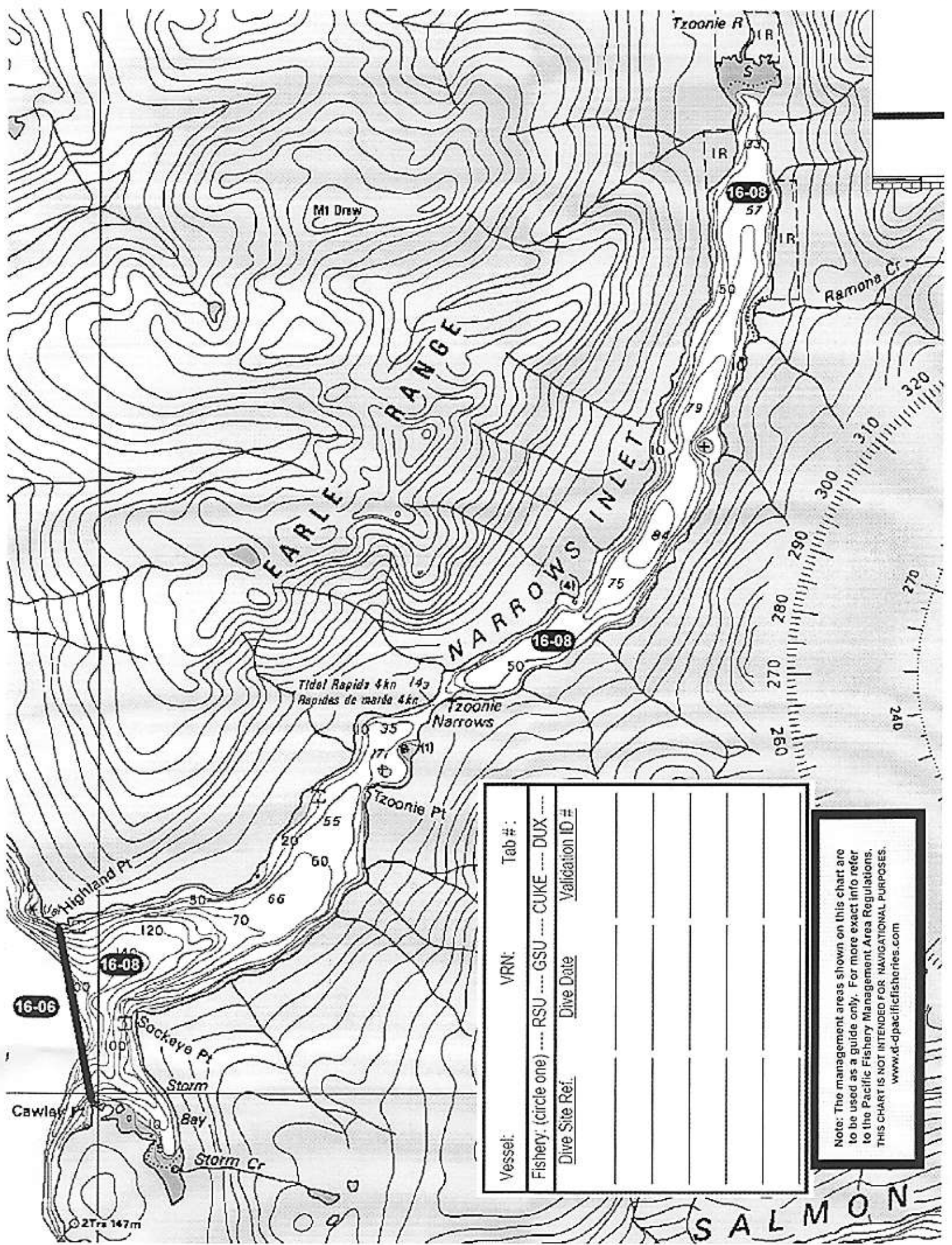
Note: The management areas shown on this chart are to be used as a guide only. For more exact info refer to the Pacific Fishery Management Area Regulations. THIS CHART IS NOT INTENDED FOR NAVIGATIONAL PURPOSES. [www.d-tpacificfisheries.com](http://www.d-tpacificfisheries.com)

**BOUÉES D'AMARRAGE**  
Toutes les bouées d'amarrage installées à des fins récréatives sont saisonnières et ne sont donc pas cartographiées sur cette carte.

**CÂBLES**  
Les signes conventionnels des câbles sous-marins et aériens ne différencient pas les câbles conducteurs d'électricité, souvent à haute tension des autres câbles de service. Les navigateurs prendront garde en passant sous tous les câbles aériens et éviteront de jeter l'ancre ou d'effectuer des opérations de fond à proximité des câbles sous-marins. La hauteur libre d'un câble aérien peut varier de sa valeur cartographiée à cause des changements dans les conditions atmosphériques, les niveaux d'eau et autres facteurs. Pour plus de renseignements, consulter l'Avis aux navigateurs n° 16 de chaque année et le volume approprié des *International Maritime Directions*.

**MOORING BUOYS**  
All mooring buoys established for recreational purposes are seasonal and therefore not shown on this chart.

**CABLES**  
The symbols for submarine and overhead cables do not differentiate between cables conducting electric power, often at high voltages, and other types of utility cables. Mariners are advised to exercise caution when passing under all overhead cables and to avoid anchoring or conducting seabed operations in the vicinity of submarine cables. The clearance of an overhead cable may differ from its charted value due to changes in atmospheric conditions, water levels and other factors. For additional information, consult Notice to Mariners No. 16 of each year and the appropriate volume of *CHS Sailing Directions*.



Vessel:	VRN:	Tab #:
Fishery: (circle one) .... RSU .... GSU .... CUKE .... DUX ....		
Dive Site Ref.:	Dive Date:	Validation ID #:

Note: The management areas shown on this chart are to be used as a guide only. For more exact info refer to the Pacific Fishery Management Area Regulations. THIS CHART IS NOT INTENDED FOR NAVIGATIONAL PURPOSES. [www.d-pacificheries.com](http://www.d-pacificheries.com)

SALMON