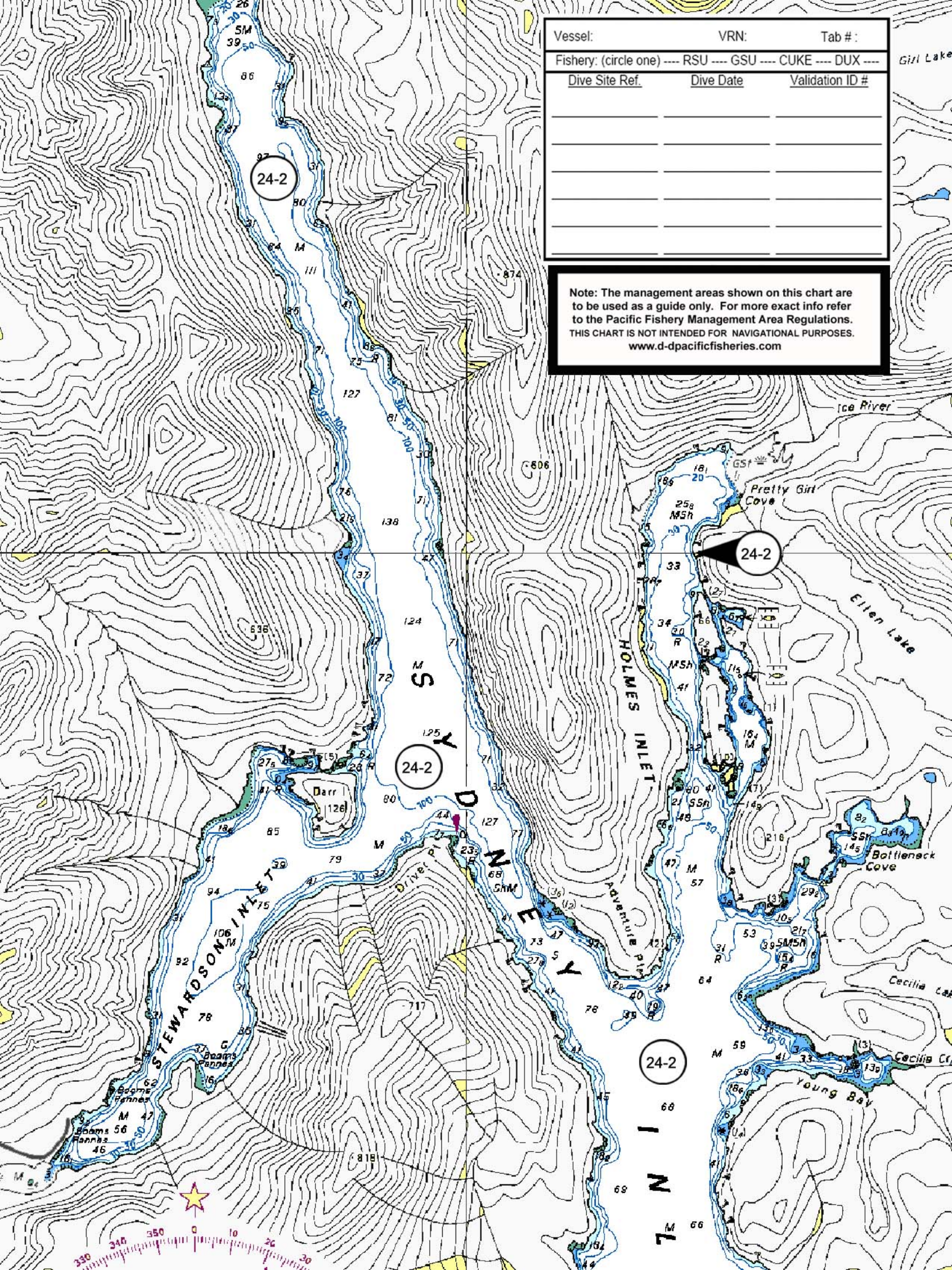


Figure 22. QMA 24A North Clayoquot: Subareas 24-4 to 24-6, 24-14. **QMA 24B South Clayoquot:** Subareas 24-7 and 24-10. **QMA 24C Sydney/Shelter Inlets:** Portion of subarea 24-2; Subareas 24-3, 24-13. For description of closures please see Appendix 1, Section 5



Vessel:	VRN:	Tab #:
Fishery: (circle one) ---- RSU ---- GSU ---- CUKE ---- DUX ----		
<u>Dive Site Ref.</u>	<u>Dive Date</u>	<u>Validation ID #</u>

Note: The management areas shown on this chart are to be used as a guide only. For more exact info refer to the Pacific Fishery Management Area Regulations. THIS CHART IS NOT INTENDED FOR NAVIGATIONAL PURPOSES. www.d-ppacificfisheries.com

Girl Lake

Ice River

Ellen Lake

Bottleneck Cove

Cecilia Lake

Cecilia Cr.

Young Bay

HOLMES INLET

DUNEY INLET

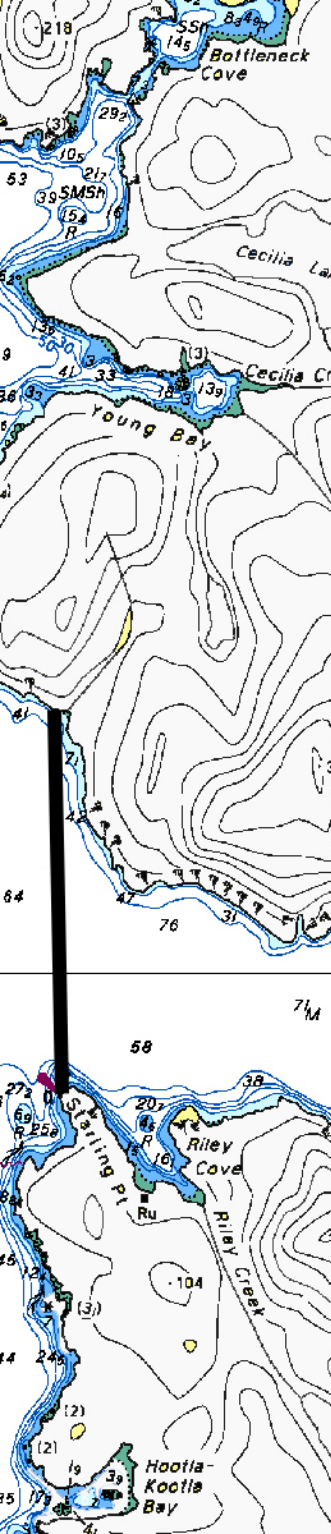
STEWARSON INLET

24-Y

24-2

24-2





Vessel:	VRN:	Tab #:
Fishery: (circle one) ---- RSU ---- GSU ---- CUKE ---- DUX ----		
Dive Site Ref.	Dive Date	Validation ID #

vitesse du courant représentent les taux maximaux normaux aux marées de vive-eau.

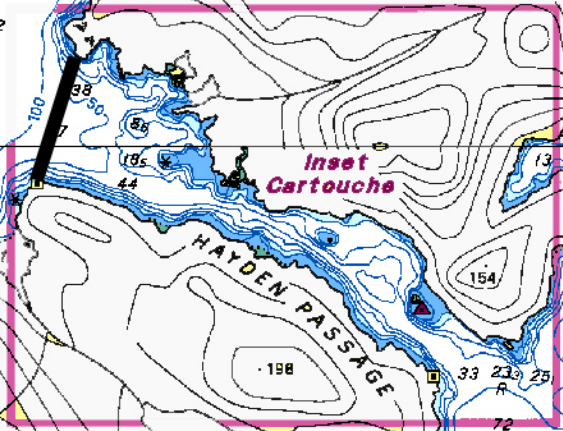
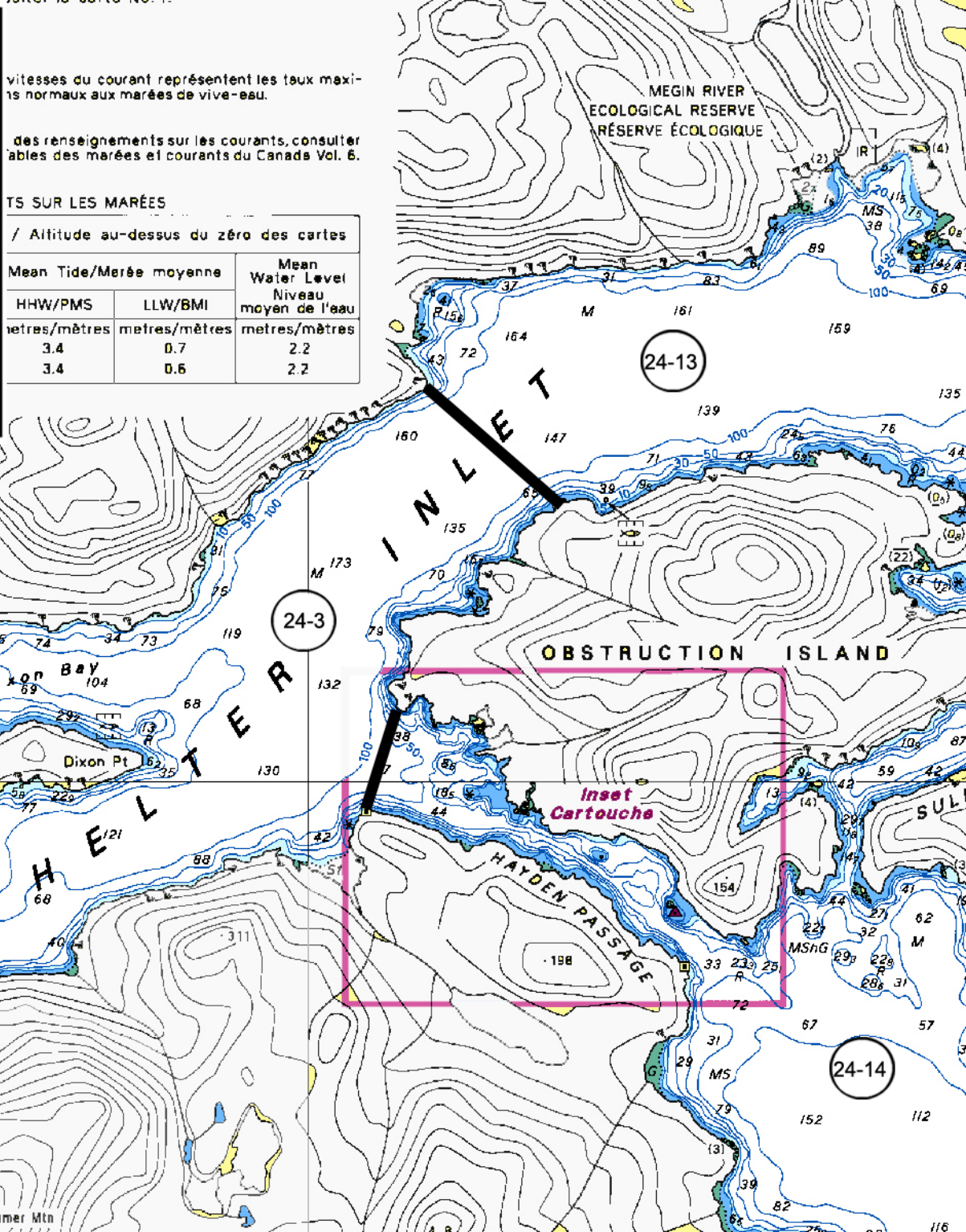
des renseignements sur les courants, consulter les tables des marées et courants du Canada Vol. 6.

TS SUR LES MARÉES

/ Altitude au-dessus du zéro des cartes

Mean Tide/Marée moyenne		Mean Water Level Niveau moyen de l'eau
HHW/PMS	LLW/BMI	
metres/mètres	metres/mètres	metres/mètres
3.4	0.7	2.2
3.4	0.6	2.2

Note: The management areas shown on this chart are to be used as a guide only. For more exact info refer to the Pacific Fishery Management Area Regulations. THIS CHART IS NOT INTENDED FOR NAVIGATIONAL PURPOSES. www.d-ppacificfisheries.com



otted on this chart without
ositions on NAD 27 must be
southward
with this cl

avec conversion des coordonnées après la
correction du SEA

reportées sur
du système
sur NAD 27
onde vers le
st pour être

raphic data
ION DIAGRA

revisions,
abréviations,

esent normal
es taux maxi-

and Current
nts, consulter
Canada Vol. 6.

TIDAL INF

Ele	La	HHW/PMS	LLW/BMI	HHW/PMS	LLW/BMI	Mean Water Level
		metres/mètres	metres/mètres	metres/mètres	metres/mètres	Niveau moyen de l'eau
		4.1	-0.1	3.4	0.7	2.2
		4.1	-0.1	3.4	0.6	2.2

Vessel:	VRN:	Tab #:
Fishery: (circle one) ---- RSU ---- GSU ---- CUKE ---- DUX ----		
Dive Site Ref.	Dive Date	Validation ID #

es sont pré-
ASSIFICATION

abréviations,

es taux maxi-

nts, consulter
Canada Vol. 6.

des cartes

Mean Water Level
Niveau moyen de l'eau
metres/mètres
2.2
metres/mètres
2.2

Note: The management areas shown on this chart are to be used as a guide only. For more exact info refer to the Pacific Fishery Management Area Regulations. THIS CHART IS NOT INTENDED FOR NAVIGATIONAL PURPOSES. www.d-mpacificfisheries.com

